

## Shopping in South East England



If you think shopping in South England is restricted to Regent Street and Carnaby Street, think again. There's plenty of shopping near London to be done. In fact, the capital is surrounded by thousands of shopping destinations, whether it's clothes, gifts or food you're looking for.

At **Bicester Shopping Village** in Oxfordshire, one of the South East's most popular shopping destinations, you will find over 100 designer collections for you to peruse, including names like Calvin Klein and Tommy Hilfiger.

Further South in Kent is the **Ashford Designer Outlet**, offering over 80 designer brands with discounts of up to 50%. Also in Kent, indulge yourself in over 300 stores at **Bluewater Shopping Centre**, the second largest shopping centre in the country.

Looking for shopping destinations that give you the chance to do a spot of sightseeing too? Then get down to **Gunwharf Quays Shopping Centre** in Portsmouth where you can shop to 'till you drop, and then visit Portsmouth Historic Dockyard and the Spinnaker Tower, both only minutes away.

Down in Sussex, **The Lanes** in Brighton is one of the South East's more eccentric shopping destinations and was once the heart of an old fishing town. Today the area is a maze of winding streets dotted with many unique and quirky shops, cafes and restaurants.

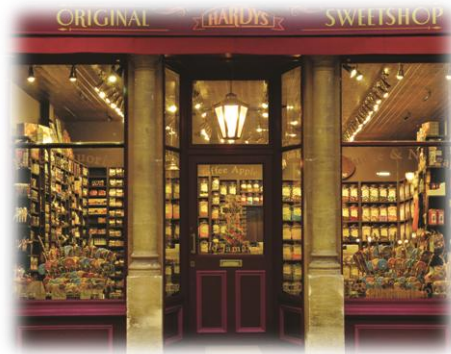
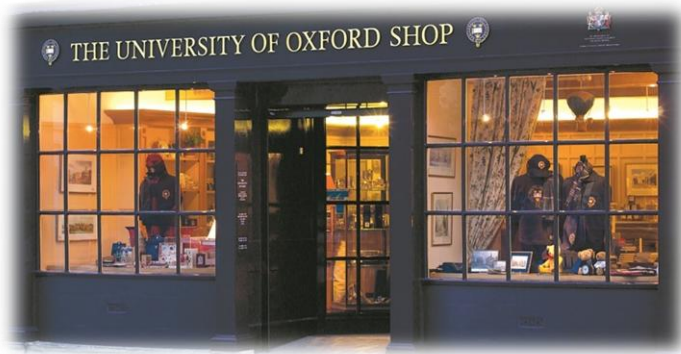
[www.visitsoutheastengland.com/things-to-do/shopping](http://www.visitsoutheastengland.com/things-to-do/shopping)

Enjoy the coffee shops, events and shops of the **Meridian Shopping Centre** of Havant.

Bring some souvenirs at **Oxford University Shop**. From the Oxford clothing range, through a collection of Oxford gifts and accessories, this store is full of genuine University of Oxford product.

Within walking distance, **Hardy's Sweet Shops** will delight your taste buds alive with its shelves of sweets in jars to choose from.

Situated in the middle of beautiful North Buckinghamshire countryside, **Boycott Farm Shop** produces premium quality Aberdeen Angus Beef and Gloucester Old Spot Pork along with fresh eggs, homemade cakes and quiches.



## Shopping for Groups in South East England

South East England is ideally located near to London and is a great destination for groups, families and individuals.

### Bicester Village Outlet Shopping - Oxfordshire



Indulge in a little more retail therapy at the Bicester Village, offering a relaxed shopping haven with over 130 designer outlet boutiques set around delightful open-air pedestrianised streets, where you'll get up to 60 per cent off previous seasons' collections. Located in the heart of Oxfordshire, just 60 minutes from both London and Birmingham the Village is easily accessible by car and train. There is also a dedicated coach service, The Shopping Express, which runs a daily service (excluding Christmas Day) direct from London.

[www.bicestervillage.com](http://www.bicestervillage.com)

### Gunwharf Quays - Hampshire

Just a few minutes from the Historic Dockyard and Old Portsmouth, Gunwharf Quays brings old and new together where visitors can shop along the pedestrian avenues at more than 85 designer outlets, eat at one of 20+ cosmopolitan bars & restaurants, or be entertained at the 14-screen cinema. The Quays host throughout the year a number of culturally themed events, including Chinese New Year.

[www.gunwharf-quays.com](http://www.gunwharf-quays.com)





## Bluewater - Kent



Situated off the M25/A2, Bluewater is one of Europe's leading shopping and leisure destinations with 330 high street and designer stores alongside an eclectic mix of one-off boutiques. Leisure activities including bike hire to explore the surrounding parkland and lake or for the more adventurous the Wild Explorer Discovery Trail, a putting course or 36ft Climbing Wall.

[www.bluewater.co.uk](http://www.bluewater.co.uk)

## Brighton Lanes - West Sussex

Wander along the 17th century Brighton Lanes and pick up ideas for jewellery, designer clothes interior design, perfumes, hats and shoes or relax alfresco in Brighton Square. North Laine has a laid-back bohemian charm and more than 300 individual and quirky shops.

[www.visitbrighton.com](http://www.visitbrighton.com)



## Windsor Royal Shopping - Berkshire



Set amidst the grandeur of the refurbished Victorian railway station, Windsor Royal Shopping is located opposite Windsor Castle and has over 40 exciting shops, an array of continental style restaurants and bars and has an art and craft market open 7 days a week.

[www.windsorroyalshopping.co.uk](http://www.windsorroyalshopping.co.uk)

## Ashford Designer Outlet - Kent

On the outskirts of Ashford in Kent, Ashford Designer Outlet is easy to find, being signposted from Junction 10 on the M20 motorway. If you enjoy shopping and love getting something good at a bargain price, this is the place to come. There are over 75 stores, making it one of the biggest of its kind in England.

[www.mcarthurglen.com/uk/ashford-designer-outlet/en/](http://www.mcarthurglen.com/uk/ashford-designer-outlet/en/)

